

IceTheme

freeze your joomla template



IT BLOGGY Installation Guide

Copyright Disclaimer

Copyright © 2008 IceTheme - <http://www.icetheme.com>

This manual can NOT be redistributed without written permission from IceTheme

Author:

Michael Danson

Terms of Use

All the materials and/or graphics contained in the IceTheme template folders MUST be used ONLY with the IT Bloggy Template from IceTheme.com

TABLE OF CONTENTS

1.	Introduction	3
2.	Installing IT Bloggy Template in Joomla 1.5.x.....	3
3.	Setting up IT Bloggy with the sample data.....	4
4.	Setting up IT Bloggy without the sample data.....	4
5.	Setup of the IT Bloggy Menus and Modules.....	4
6.	More Information.....	10

1. INTRODUCTION

These instructions are for installing the template and associated modules, with or without the sample data included.

The sample data is very helpful and enables you to setup the template exactly as the demo. If you have data already on your system that you would like to keep, do NOT install the sample data.

The setup instructions for installing with and without the sample data are shown below.

The IT Bloggy template package contains the following files and modules.

- IT Bloggy Template
- IT Bloggy Sample Data
- IceSlider (ImageSlide, TabularSlide and CarouselSlide) Module
- IceSlideShow Module
- IceScroller Module
- IceAccordion Module

2. INSTALLING IT BLOGGY TEMPLATE IN JOOMLA 1.5.X

- a. Download the IT Bloggy all-in-one template package
(*IceTheme IT Bloggy Template package Download*)
- b. Install the IT Bloggy Template zip file from within this package.
- c. Download and install the following IT Bloggy IceTheme modules
 - i. IceSlider module
 - ii. IceSlideShow module
 - iii. IceScroller module
 - iv. IceAccordion module
- d. Make the IT Bloggy template the default template within Joomla Template Manager

3. SETTING UP IT BLOGGY **WITH** THE SAMPLE DATA

- a. Copy the folder from within *IT Bloggy Sample Data* into your Joomla root directory
- b. Import the sample data (sample_data.sql) into your database

Important: Installing the sample data will delete any existing data. Do NOT install if you have existing data that you want to keep. Please consult the section 'Setting up IT Bloggy without Sample Data'

You can login to the Joomla administration panel with:

username: admin

password: icetheme

(you can change this within the administration panel)

4. SETTING UP IT BLOGGY **WITHOUT** THE SAMPLE DATA

- a. Copy the **images** folder from within the *IT Bloggy Sample Data folder* into your Joomla root directory
- b. Setup the menu and module parameters using the section below to help you

5. SETUP OF THE IT BLOGGY MENUS AND MODULES

The following guide is based on the setup of the IceTheme modules as seen in the demo at demo.icetheme.com. Please pay careful attention to the screenshots, as they show the settings used on the demo. Certain module functions are controlled through these settings and can be changed to suit your specific requirements.

MAIN MENU (WITH DROP-DOWN FEATURE)



- a. The Position of the Main Menu is *mainmenu*.

- b. The following show the module settings for **Menu Style** and **Always show sub-menu items**:

Parameters

▼ Module Parameters	
Menu Name	mainmenu
Menu Style	List
Start Level	0
End Level	0
Always show sub-menu items	<input type="radio"/> No <input checked="" type="radio"/> Yes
Target Position	
► Advanced Parameters	
► Other Parameters	

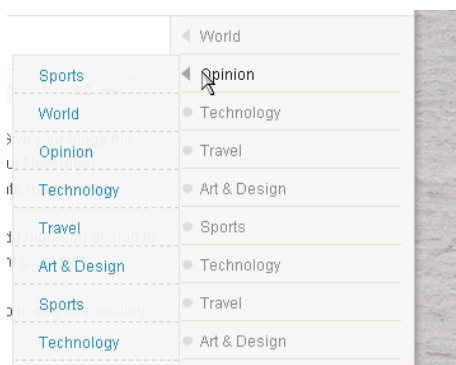
- c. In **Advanced Parameters**, change the **Menu Tag ID** to *nav*:

Parameters

► Module Parameters	
▼ Advanced Parameters	
Show Whitespace	No
Caching	Use Global
Menu Tag ID	nav
Menu Class Suffix	
Module Class Suffix	
Maximum Menu Depth	10
► Other Parameters	

Please note: For correct appearance (to keep the menu on one line), limit the number of main menu options to not more than 7 or 8 items.

VERTICAL MENU (LEFT SIDE)



Note: This menu must be in position *othermenu* to function as in the demo.

a. The following **Module Parameters** show menu setup used in the demo:

Parameters

▼ **Module Parameters**

Menu Name	othermenu
Menu Style	List
Start Level	0
End Level	0
Always show sub-menu Items	<input type="radio"/> No <input checked="" type="radio"/> Yes
Target Position	

► **Advanced Parameters**

► **Other Parameters**

b. The following screenshot is taken from the demo and shows an example of the **Menu** settings, including 2nd and 3rd level menu items:

Menu Item Manager: [othermenu]

Filter: Max Levels: 10

#	Menu Item	Default	Published	Order	Access Level	Type
1	World		✓	74	Public	Articles » Category / Blog
2	└ World		✓	1	Public	Articles » Category / Blog
3	└ └ Dummy Item		✓	1	Public	Url
4	└ └ └ Dummy Item		✓	1	Public	Url
5	└ └ └ Dummy Item		✓	2	Public	Url
6	└ └ └ Dummy Item		✓	2	Public	Url
7	└ └ └ Dummy Item		✓	3	Public	Url
8	└ └ └ Dummy Item		✓	4	Public	Url
9	└ Sports		✓	2	Public	Articles » Category / Blog

ICESLIDER (TAB SLIDE) MODULE

Saudi prince to build tallest building



Lorem ipsum dolor sit amet, consectetur adipiscing elit. Morbi mattis tempor velit. Nulla quis purus. Nulla facilisi. Sed ullamcorper. Proin convallis nibh a libero. Sed in dui. Nullam aliquet. Suspendisse pede mauris, molestie sed, semper ut, vehicula eu, nunc. Quisque consectetur, eros sit amet feugiat auctor, justo orci elementum mauris..

Word Travel Business Sports Living

a. The following **Module Parameters** show the demo setup using **Articles** from the **Article Category** *IceSlider (Tabs)*:

Parameters

▼ Module Parameters	
IceSlider Layout	Tabs (default) ▼
Slider Width (px)	546
Slider Height (px)	150
Animation Duration (ms)	1500
Animation Interval	4000
Transition Effect	Quint.easeOut ▼
AutoPlay	No ▼
On MouseOver Behaviour	Mouse Click ▼
Total Images	1,2,3
CarouselSlide Text	Inside IT Tribune
<hr/>	
Category Items	IceTheme/IceSlider (Tabs) ▼
Article Ordering	Article Order ▼
Number of Items	5
<hr/>	
Module Class Suffix	
▶ Advanced Parameters	

Note: The **Category Item** must be an active category that contains at least one active article. All the articles within this category are displayed in the module, up to the **Number of Items** selected (as shown above).

(The position of this module on the demo at demo.icetheme.com is *iceslider*)

ICESLIDER (CAROUSEL SLIDE) MODULE

- The following **Module Parameters** show settings used in the demo, using **Articles** from the **Article Category** *IceSlider (CarouselSlide)*:

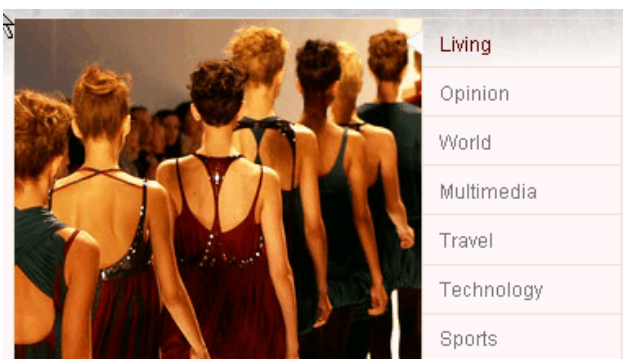
Parameters

▼ Module Parameters	
IceSlider Layout	Carousel Slide ▼
Slider Width (px)	565
Slider Height (px)	170
Animation Duration (ms)	1000
Animation Interval	5500
Transition Effect	Cubic.easeOut ▼
AutoPlay	No ▼
On MouseOver Behaviour	Mouse Click ▼
Total Images	1,2,3,4
CarouselSlide Text	Inside IT Tribune
<hr/>	
Category Items	IceTheme/IceSlider (CarouselSlide) ▼
Article Ordering	Article Order ▼
Number of Items	5
<hr/>	
Module Class Suffix	
▶ Advanced Parameters	

Note: The **Category Item** must be an active category that contains at least one active article. All the articles within this category are displayed in the module, up to the **Number of Items** selected (as shown above).

(The position of this module on the demo at demo.icetheme.com is *CarouselSlide*)

ICESLIDESHOW MODULE



- The following **Module Parameters** show the demo setup using **Articles** from the **Article Category** *Ice Slide Show*

Parameters

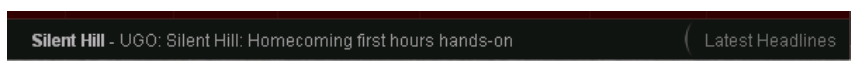
▼ Module Parameters	
Slide Show Width (px)	371
Slide Show Height (px)	210
Slide Show Pictures Width (px)	250
Slide Show List Width (px)	121
Slide Show List Height (px)	180
<hr/>	
Category Items	IceTheme/IceSlideShow ▼
Article Ordering	Article Order ▼
Number of Items	7
<hr/>	
Module Class Suffix	
▶ Advanced Parameters	

Note: The **Category Item** must be an active category that contains at least one active article. All the articles within this category are displayed in the module, up to the **Number of Items** selected (as shown above).

- c. Each section (option) of the IceSlideShow module is a different article. This enables you to combine a group of articles in one module. The articles must all be within the same **Article Category**.

(The position of this module on the demo at demo.icetheme.com is *iceslideshow*)

ICESCROLLER MODULE



- a. The following **Module Parameters** show the demo setup using **Articles** from the **Article Category Ice Scroller**:

Parameters

▼ Module Parameters

Pre Text	Latest Headlines
Scroller Width (px)	390
Scroller Height (px)	30
Animation Duration (ms)	1400
Animation Delay (ms)	4000
Animation Interval	3000
Transition Effect	Cubic.easeInOut ▼
AutoPlay	Yes ▼
Scroller Direction	Horizontal ▼
Category Items	IceTheme/IceScroller ▼
Article Ordering	Article Order ▼
Number of Items	4
Module Class Suffix	

► Advanced Parameters

Note: The **Category Item** must be an active category that contains at least one active article. All the articles within this category are displayed in the module, up to the **Number of Items** selected (as shown above).

(The position of this module on the demo at demo.icetheme.com is *icescroller*)

6. MORE INFORMATION

Please visit the IceTheme forum if you require more assistance ([click here](#)).